

INSTALLATION OF A US-EXPERT DRIVER ON WINDOWS 8

Important:

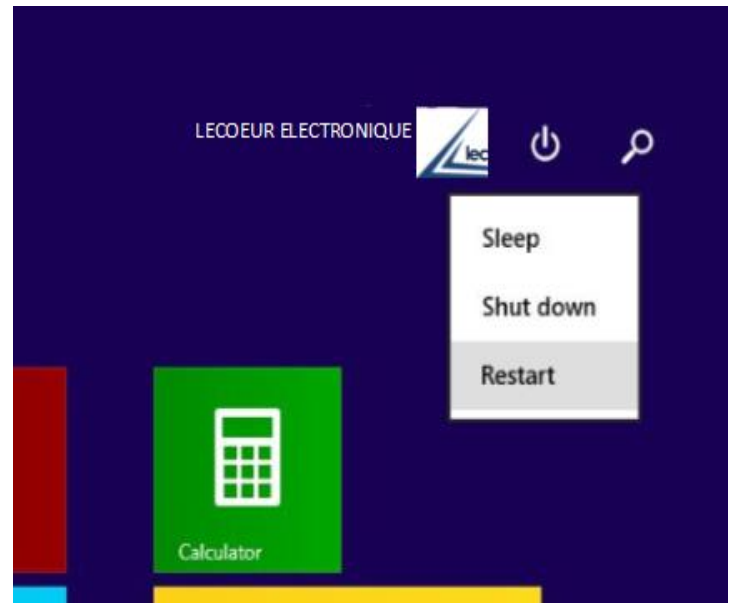
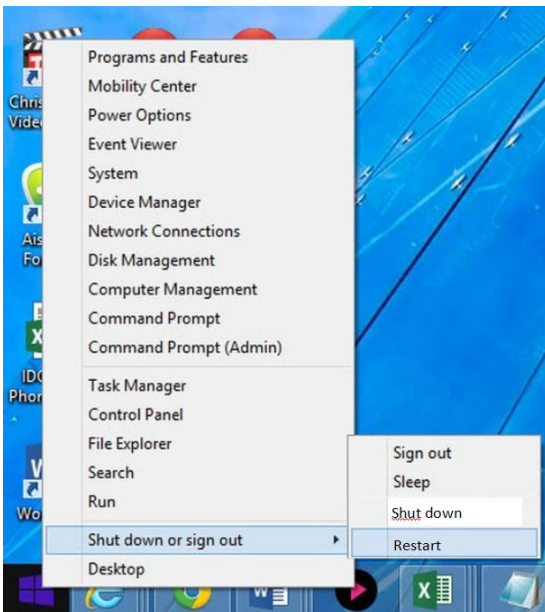
Driver installation of the US-EXPERT on Windows 8 requires disabling the control signatures of Windows drivers.

Do not connect the US-EXPERT before the end of the manipulation.

1 – Install US-EXPERT application with the installer "US-EXPERT" provided in the USB key.

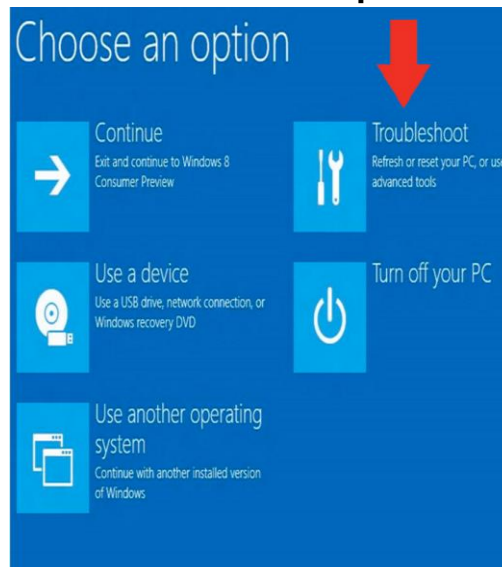
2 – Right click on the “Start button” on the traditional desktop or tap the Windows key and click on power button to the top-right corner.

Hold down the **SHIFT** key of your keyboard while you click **RESTART**.

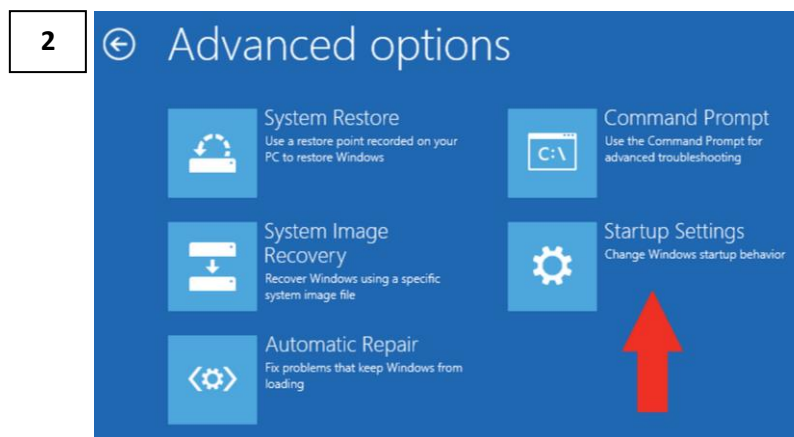
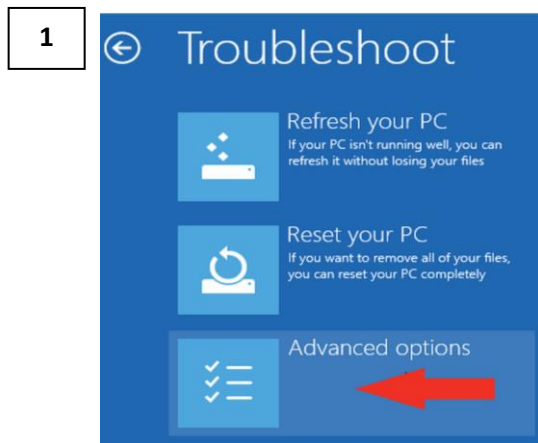


After reboot

3 – Select « **Troubleshoot** » from the « **Choose an option** » screen.



4 – Select « **Advanced options** » from the « **Troubleshoot** » (CF: picture 1) menu and select « **Startup Settings** » from the « **Advanced options** » menu. (CF: picture 2)



5 – Select « **Restart** ».

- 6 – After restarting your computer a second time:
 7 – Choose
 « **Disable driver signature enforcement** »
 from the list by typing « **F7** »

**Your computer will restart automatically
 for a late time.**

Startup Settings

Press a number to choose from the options below:

Use number keys or functions keys F1-F9.

- 1) Enable debugging
- 2) Enable boot logging
- 3) Enable low-resolution video
- 4) Enable Safe Mode
- 5) Enable Safe Mode with Networking
- 6) Enable Safe Mode with Command Prompt
- 7) Disable driver signature enforcement
- 8) Disable early launch anti-malware protection
- 9) Disable automatic restart after failure

Press F10 for more options

Press Enter to return to your operating system



- 8 – After restarting, it remains only to connect the US-EXPERT; however, Windows will display a warning message.

When the warning appears, click « **Install this driver software anyway** ».

- 9 – Wait until the end of the driver installation (recognition) of the US-EXPERT, before run
 « **US-EXPERT.exe** » on your desktop.

